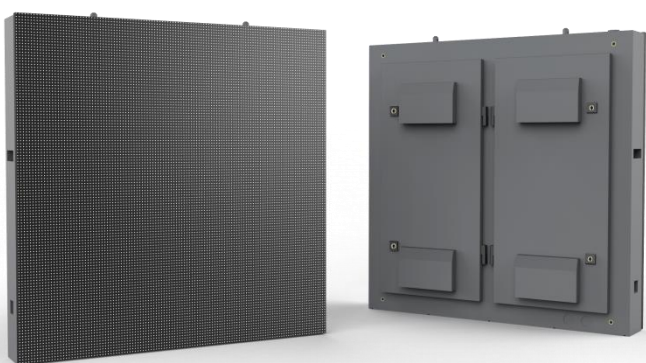




# Outdoor LED Display System

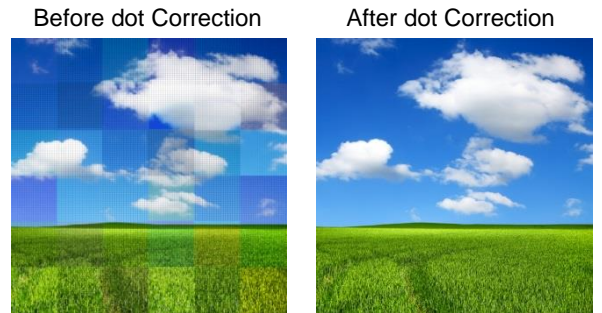
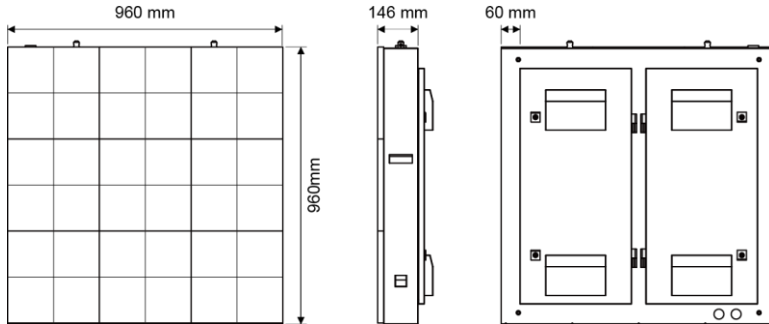
## SE-6

- Superior color performance by dot correction
- High brightness, contrast ratio and wide viewing angle for clarity and easy readability
- High refresh rate for flicker free
- PFC (Power Factor Controller) power supply for improved efficiency, energy saving and lower operating costs
- IP65 rated to protect against dust and waterproof



# SE-6

Delta's SE-6 is a cost-effective outdoor SMD LED display that offers outstanding performance and reliability. Ideal solution with professional dot correction technology provides superior color performance. The SE-6 provides the best viewing experience with optimal color, brightness and contrast.



## Specifications

Product Name		SE-6	
Pixel Pitch		6mm	
Pixel Configuration		R/G/B 3 in 1 SMD	
LED Type		Nichia	Delta selected
Resolution (W x H)		160 x160 pixels	
Pixel Density		27,777 pixels/sqm	
		2,580 pixels/sqft	
Brightness	Native (max)	7,000 cd/m <sup>2</sup>	6,000 cd/m <sup>2</sup>
	Calibrated	6,000 cd/m <sup>2</sup> *	5,500 cd/m <sup>2</sup> *
Dimming Capability		0~255 level	
Contrast Ratio		2,000 : 1	1,500 : 1
Refresh Rate		5,100 Hz	2,880 Hz
Color Processing		15 bit	14 bit
Colors		35 trillion	4.4 trillion
Viewing Angle	Horizontal	140°	
	Vertical	90°	
Lifetime		100,000 hrs	
Power Input		AC 100~240V	
Power Consumption	Max. (W/cabinet)	609	680
	Avg. (W/cabinet)	203	227
Dimensions (W x H x D)	Rear Access	960 x 960 x 140 mm (37.8 x 37.8 x 5.51 inch)	
Weight		43.5 kg/cabinet (95.9 lbs/cabinet)	
Temperature	Operating	-20°~50°C (-4°~122°F)	
	Storage	-30°~60°C (-22°~140°F)	
Relative Humidity	Operating	10~90%	
	Storage	10~90%	
Service Access		Rear	
IP Grade		Front IP65 / Rear IP54	
Certification		UL,CB,CE,FCC,CCC	

Ver: 1EC631

\* Higher specification is available on request.

※ All specifications are subject to change without prior notice.