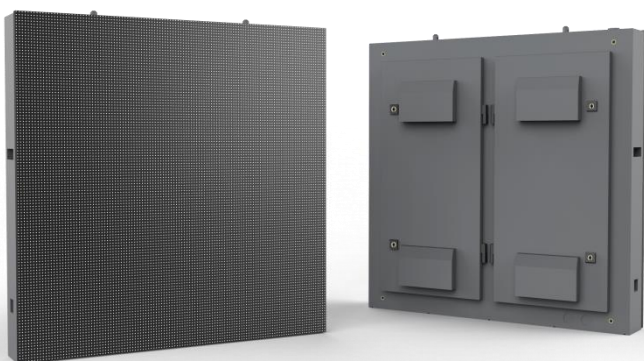




Outdoor LED Display System

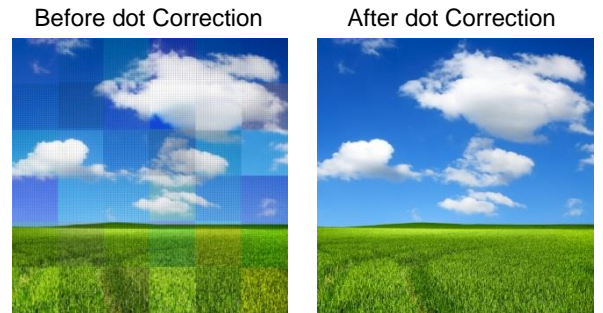
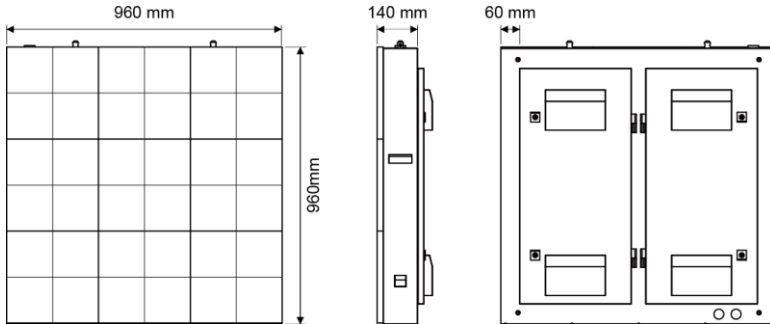
SE-16

- Superior color performance by dot correction
- High brightness, contrast ratio and wide viewing angle for clarity and easy readability
- High refresh rate for flicker free
- PFC (Power Factor Controller) power supply for improved efficiency, energy saving and lower operating costs
- IP65 rated to protect against dust and waterproof



SE-16

Delta's SE-16 is a cost-effective outdoor SMD LED display that offers outstanding performance and reliability. Ideal solution with professional dot correction technology provides superior color performance. The SE-16 provides the best viewing experience with optimal color, brightness and contrast.



Specifications

Product Name		SE-16	
Pixel Pitch		16mm	
Pixel Configuration		R/G/B 3 in 1 SMD	
LED Type		Nichia	Delta Selected
Resolution (W x H)		60 x 60 pixels	
Pixel Density		3,906 pixels/sqm	
		363 pixels/sqft	
Brightness	Native (max)	6,500 cd/m ²	6,000 cd/m ²
	Calibrated	6,000 cd/m ²	5,500 cd/m ²
Dimming Capability		0~255 level	
Contrast Ratio		7,000 : 1	4,500 : 1
Refresh Rate		8,100 Hz	
Color Processing		16 bit	
Colors		281 trillion	
Viewing Angle	Horizontal	140°	
	Vertical	90°	
Lifetime		100,000 hrs	50,000 hrs
Power Input		AC 100~240V	
Power Consumption	Max. (W/cabinet)	660	713
	Avg. (W/cabinet)	220	238
Dimensions (W x H x D)	Rear Access	960 x 960 x 143.5 mm (37.8 x 37.8 x 5.65 inch)	
Weight		41.5 Kg/cabinet (91.5 lbs/cabinet)	
Temperature	Operating	-20°~50°C (-4°~122°F)	
	Storage	-30°~60°C (-22°~140°F)	
Relative Humidity	Operating	10~90%	
	Storage	10~90%	
Service Access		Rear	
IP Grade		Front IP65 / Rear IP54	
Certification		UL,CB,CE,FCC,CCC	

Ver: 1EC631

* Higher specification is available on request.

※ All specifications are subject to change without prior notice.