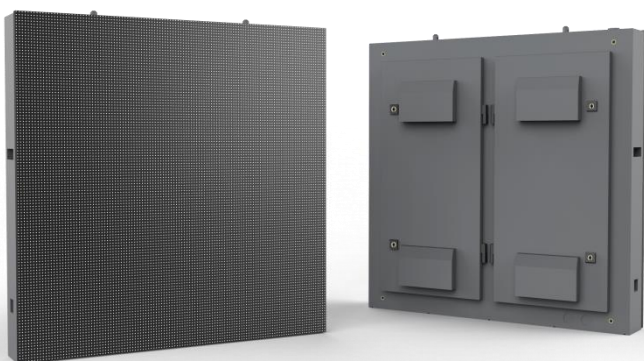




Outdoor LED Display System

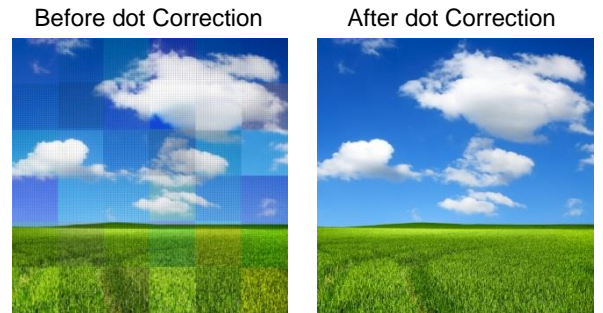
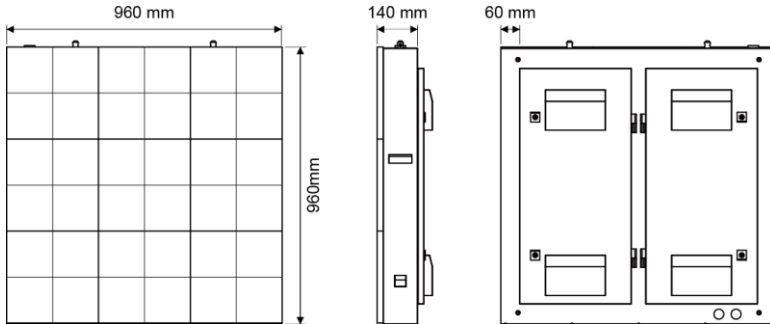
SE-10

- Superior color performance by dot correction
- High brightness, contrast ratio and wide viewing angle for clarity and easy readability
- High refresh rate for flicker free
- PFC (Power Factor Controller) power supply for improved efficiency, energy saving and lower operating costs
- IP65 rated to protect against dust and waterproof



SE-10

Delta's SE-10 is a cost-effective outdoor SMD LED display that offers outstanding performance and reliability. Ideal solution with professional dot correction technology provides superior color performance. The SE-10 provides the best viewing experience with optimal color, brightness and contrast.



Specifications

Product Name		SE-10	
Pixel Pitch		10mm	
Pixel Configuration		R/G/B 3 in 1 SMD	
LED Type		Nichia	Delta Selected
Resolution (W x H)		96 x 96 pixels	
Pixel Density		10,000 pixels/sqm	
		929 pixels/sqft	
Brightness	Native (max)	6,500 cd/m ²	6,000 cd/m ²
	Calibrated	6,000 cd/m ² *	5,500 cd/m ² *
Dimming Capability		0~255 level	
Contrast Ratio		4,000 : 1	3,500 : 1
Refresh Rate		5,520 Hz	960 Hz
Color Processing		16 bit	12 bit
Colors		281 trillion	68 billion
Viewing Angle	Horizontal	140°	
	Vertical	90°	
Lifetime		100,000 hrs	50,000 hrs
Power Input		AC 100~240V	
Power Consumption	Max. (W/cabinet)	601	699
	Avg. (W/cabinet)	200	233
Dimensions (W x H x D)	Rear Access	960 x 960 x142 mm (37.8 x 37.8 x 5.59 inch)	
Weight		41.5 kg/cabinet (91.5 lbs/cabinet)	
Temperature	Operating	-20°~50°C (-4°~122°F)	
	Storage	-30°~60°C (-22°~140°F)	
Relative Humidity	Operating	10~90%	
	Storage	10~90%	
Service Access		Rear	
IP Grade		Front IP65 / Rear IP54	
Certification		UL,CB,CE,FCC,CCC	

Ver: 1EC631

* Higher specification is available on request.

※ All specifications are subject to change without prior notice.